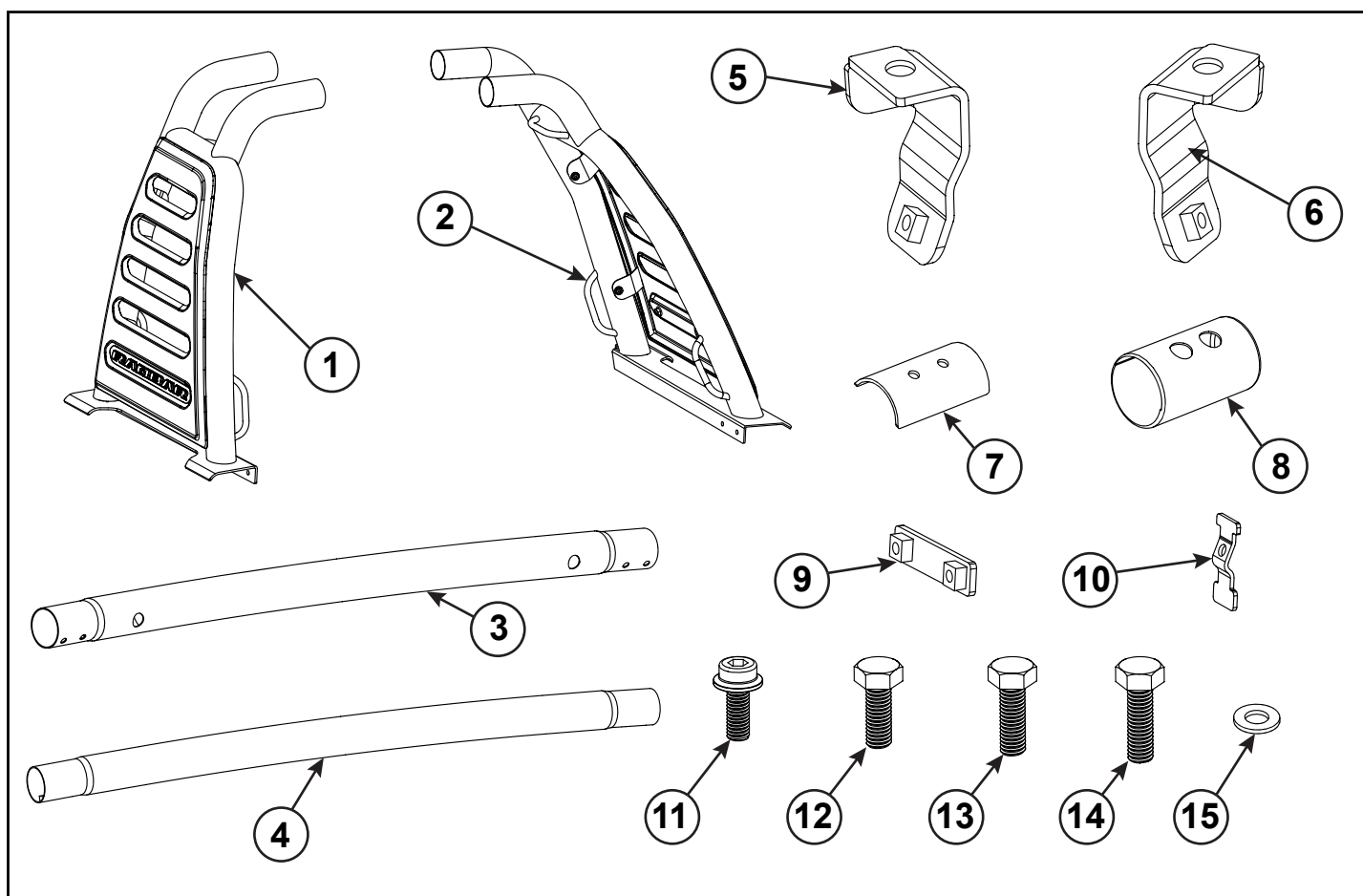
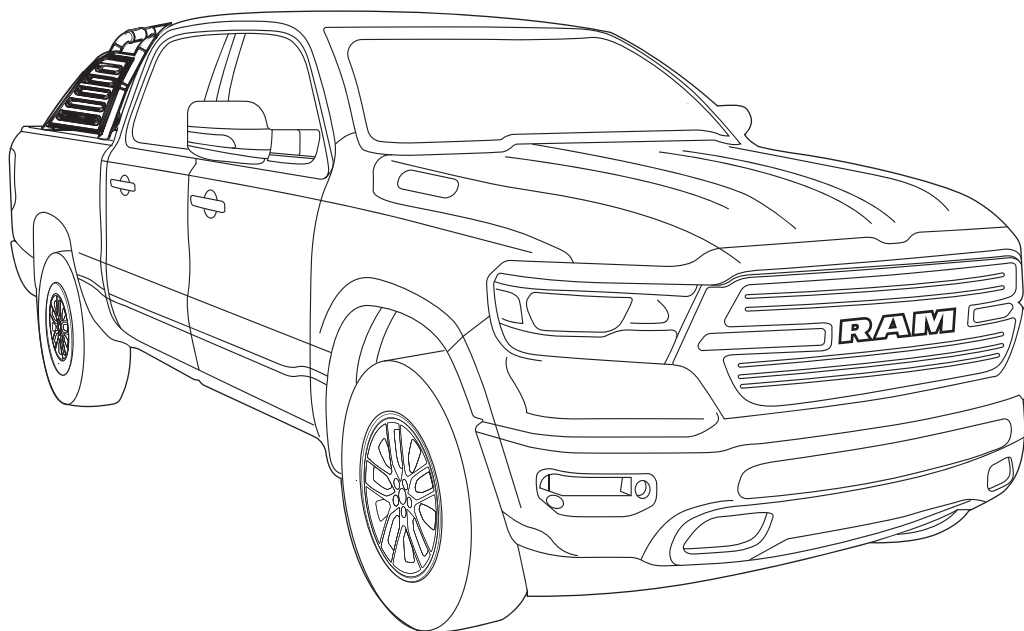


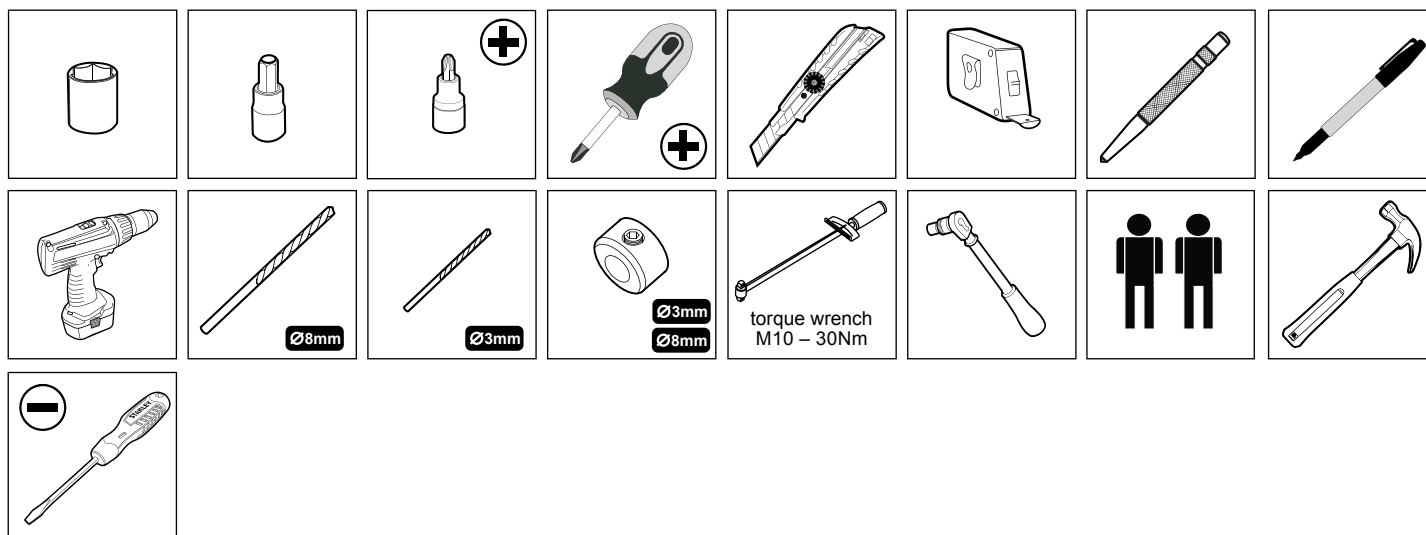


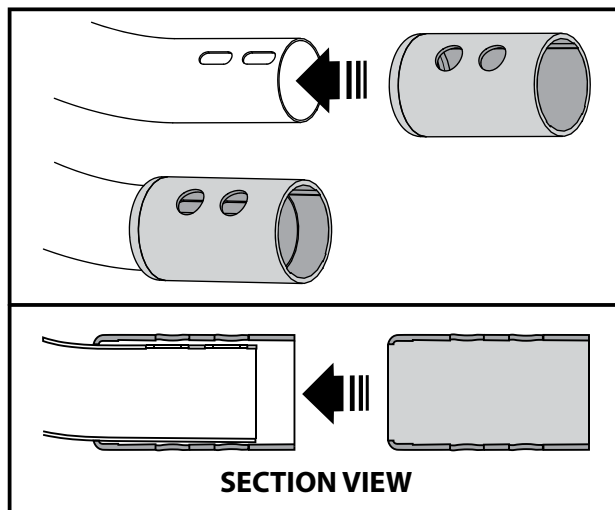
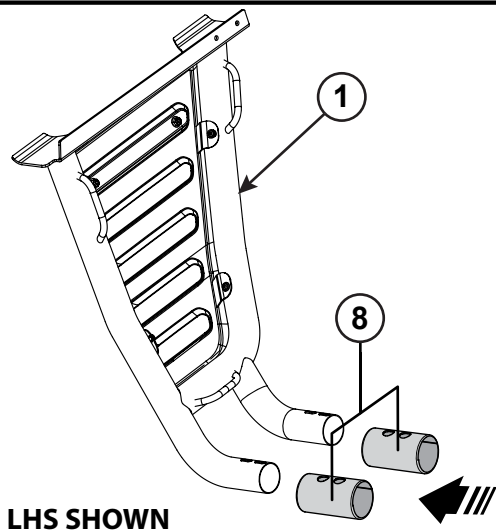
RAM RAMBAR SPORTS BAR

www.mopar.com

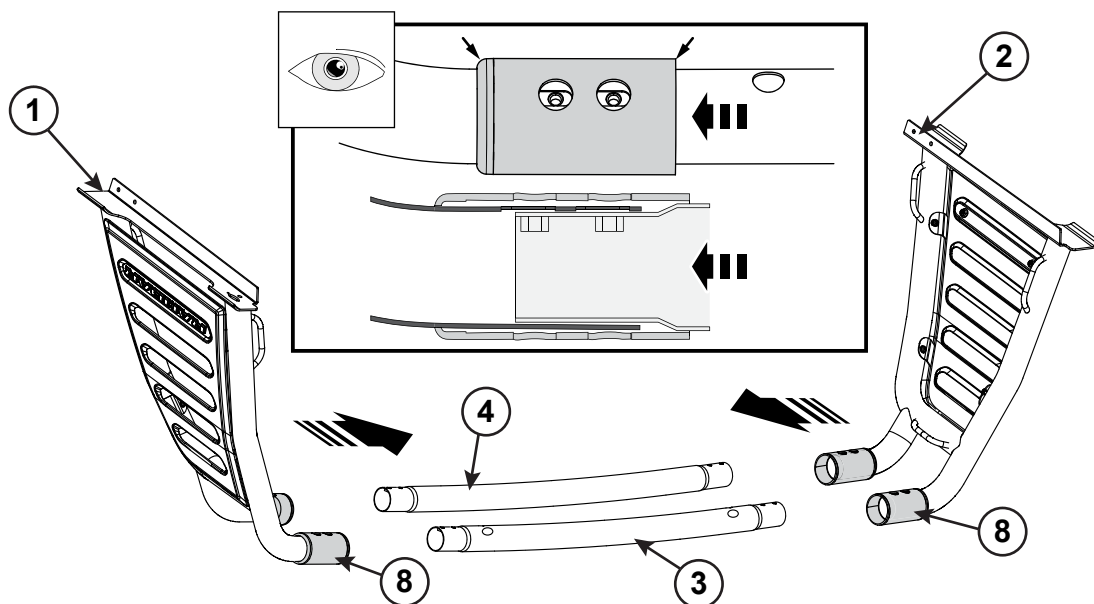


Call Out	Description	Quantity	Part Number
			82215959
1	LHS Leg	1	
2	RHS Leg	1	
3	Front Tube	1	
4	Rear Tube	1	
5	LHS Foot	1	
6	RHS Foot	1	
7	Joiner Plate	4	
8	Joiner	4	
9	Rear Foot Clamp	2	
10	Front Foot Clamp	2	
11	M8x20mm Flanged Allen Bolt	8	
12	M8x25mm Hex Head Bolt	4	
13	M8x30mm Hex Head Bolt	2	
14	M8x35mm Hex Head Bolt	2	
15	M8x1.6mm Flat Washer	8	

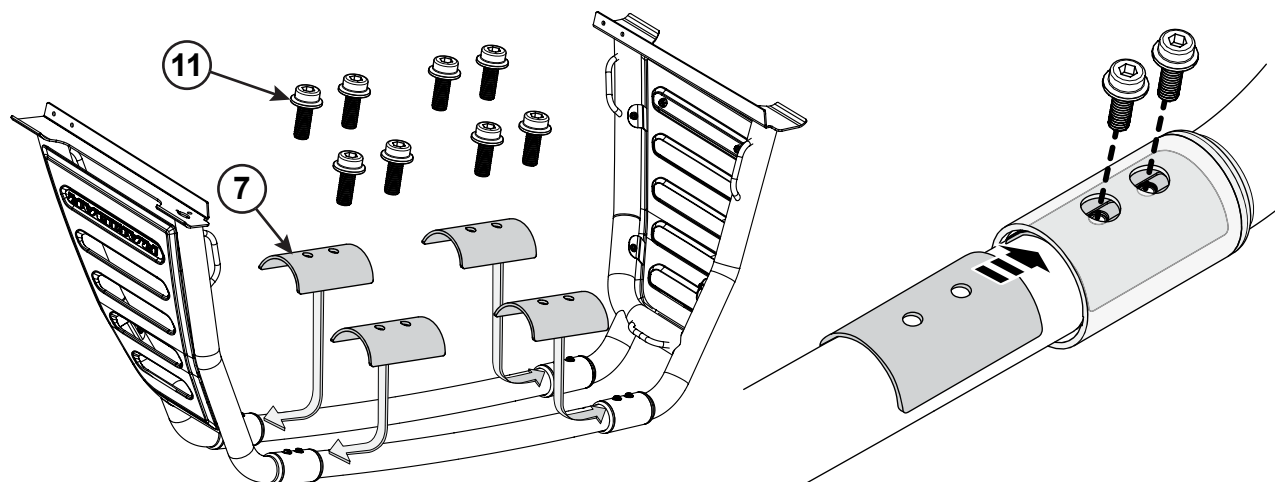




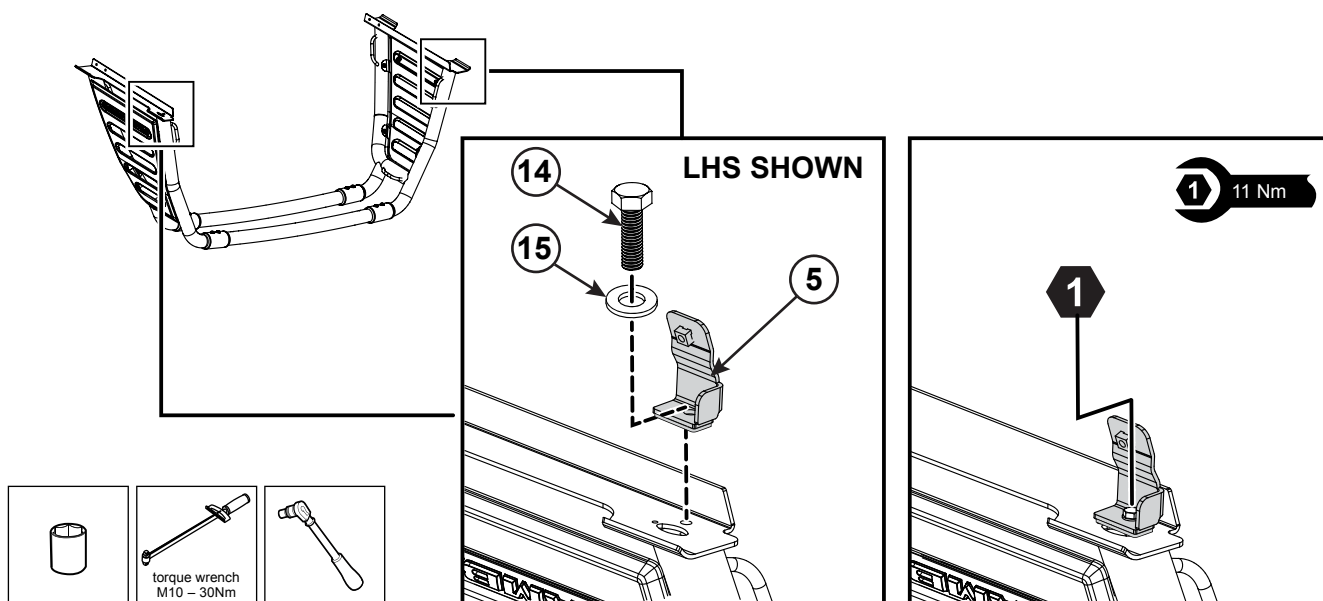
1. Assemble the Joiners (8) to the LHS Side legs (1) (by sliding the curved end over the bar first. Align the holes in the plastic Joiners with the slots in the bar as shown. Repeat the process for the RHS Side Legs (2).



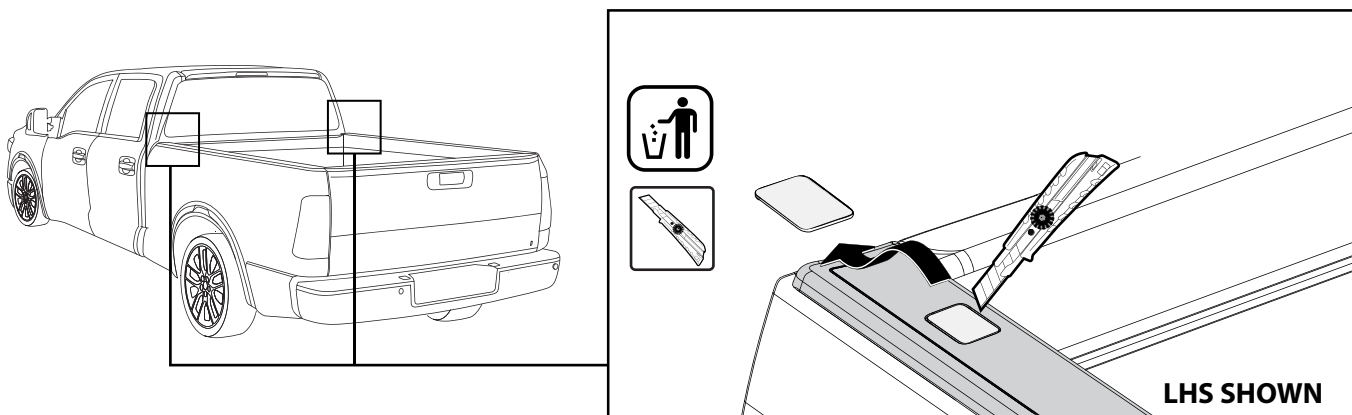
2. Assemble the Sports Bar by sliding the Front (3) and Rear (4) Tubes into the Side legs. Push the tubes into the Side legs and align the weld nuts in the Tubes with the holes in the plastic Joiners (8).



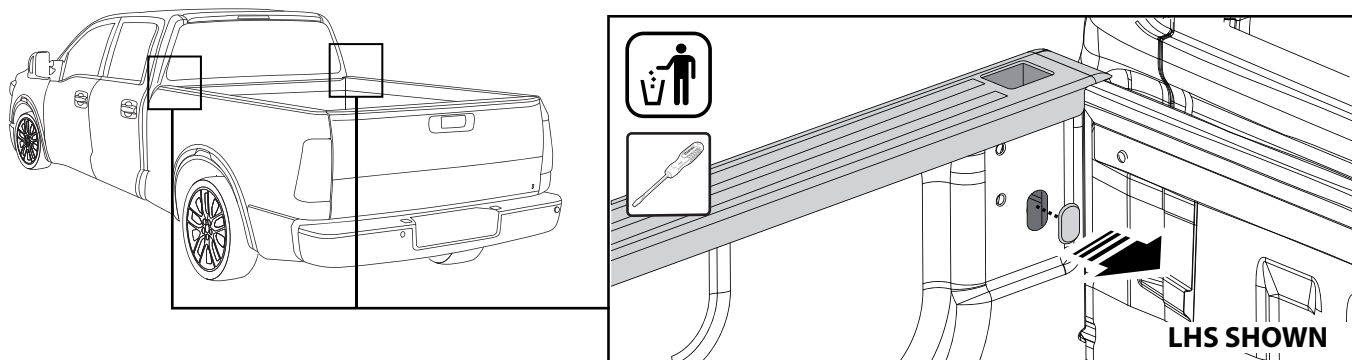
3. Slide the Joiner Plates (7) into the gaps between the plastic Joiners and the Tubes and align. Secure the Tubes together with the flanged bolts (11). Do not tighten.



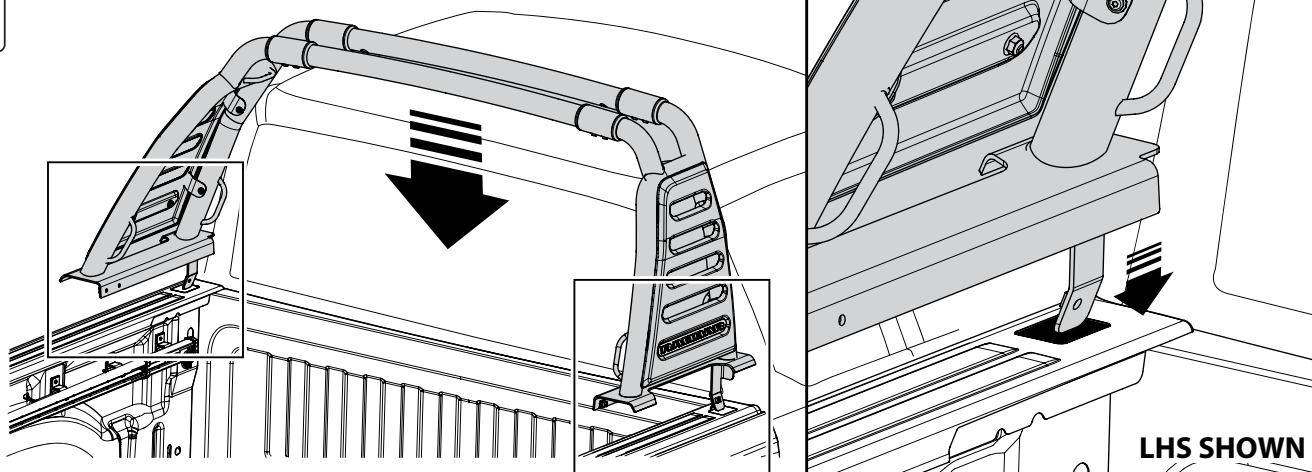
- 4.** Assemble the Left Hand Side Front Foot (5) on tub rail bracket using Hex Head Bolt (14) and Washer (15). Slide a Joiner (7) over the ends of the Tubes and push both Legs (1),(2) through the Joiners into the top Tubes (4),(5). Align the holes in the Joiners with the threaded holes in the side legs and top Tubes and loosely secure with the Flanged Allen Bolts (11).



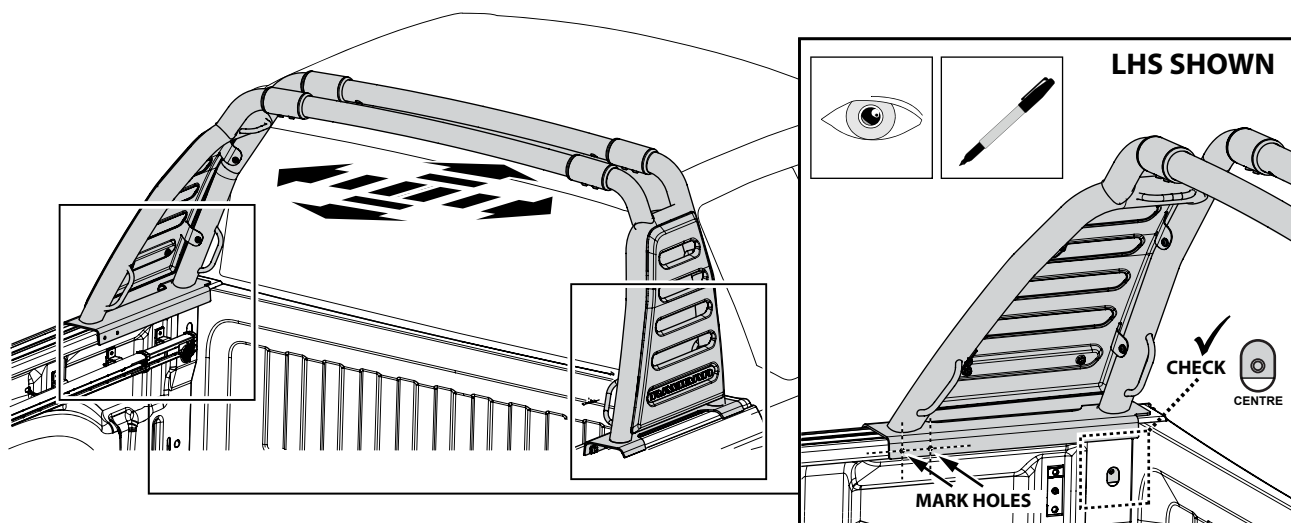
- 5.** Using a knife carefully cut out the plastic insert at the front of the LHS and RHS bed rail caps to open the clearance holes for the front feet of the Sports Bar.



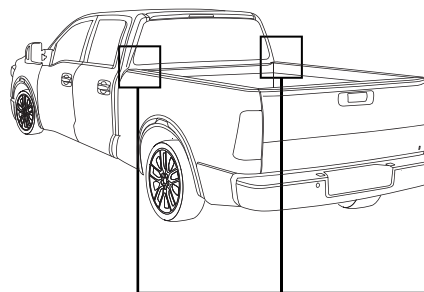
- 6.** Remove and discard the LHS and RHS plastic side plugs from the Tub.



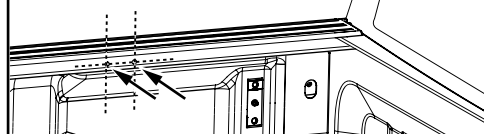
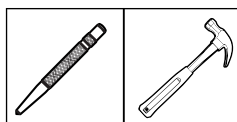
- 7.** Using two people carefully lift the sports bar into position above the tub and slowly lower the sports bar Front Feet through the bed rail stake pockets and lower the sports bar assembly onto the tub of the vehicle.



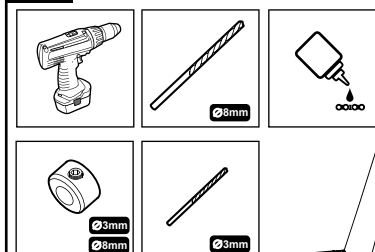
- 8.** Align the bar carefully with the side rails and the front edge of the tub and position it in the precise position it will be attached to the vehicle. Check the threaded hole in the Front Foot is centred and mark the locations of the two rear holes onto the tub with a marker. Remove the Sports Bar.



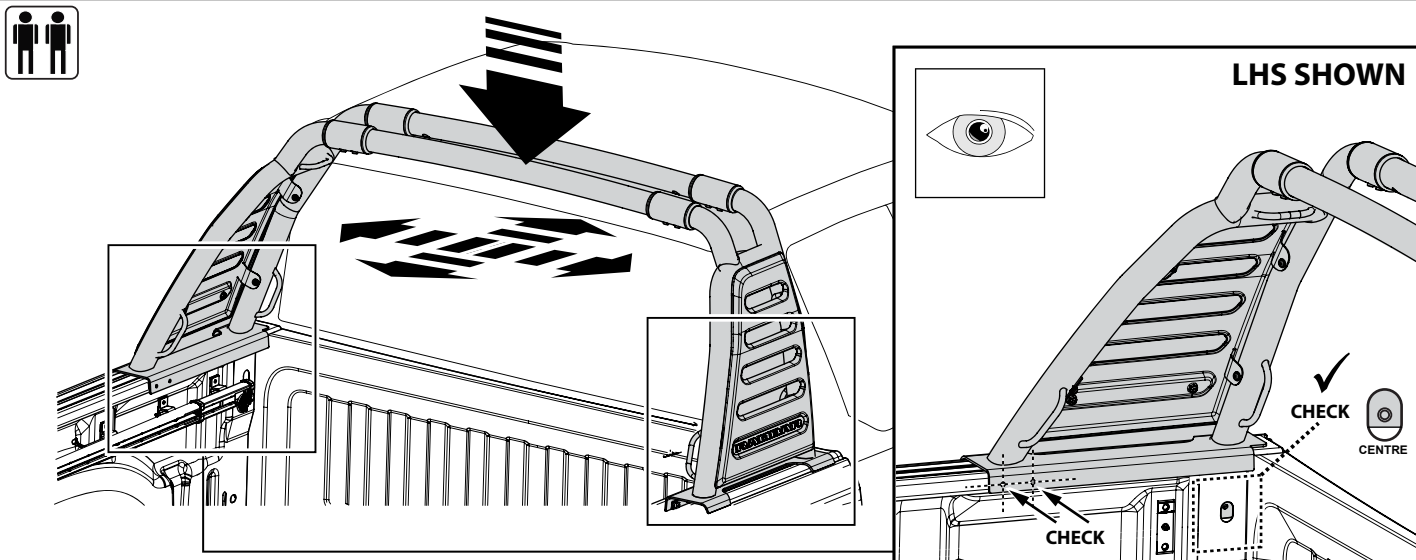
1 CENTRE PUNCH HOLES



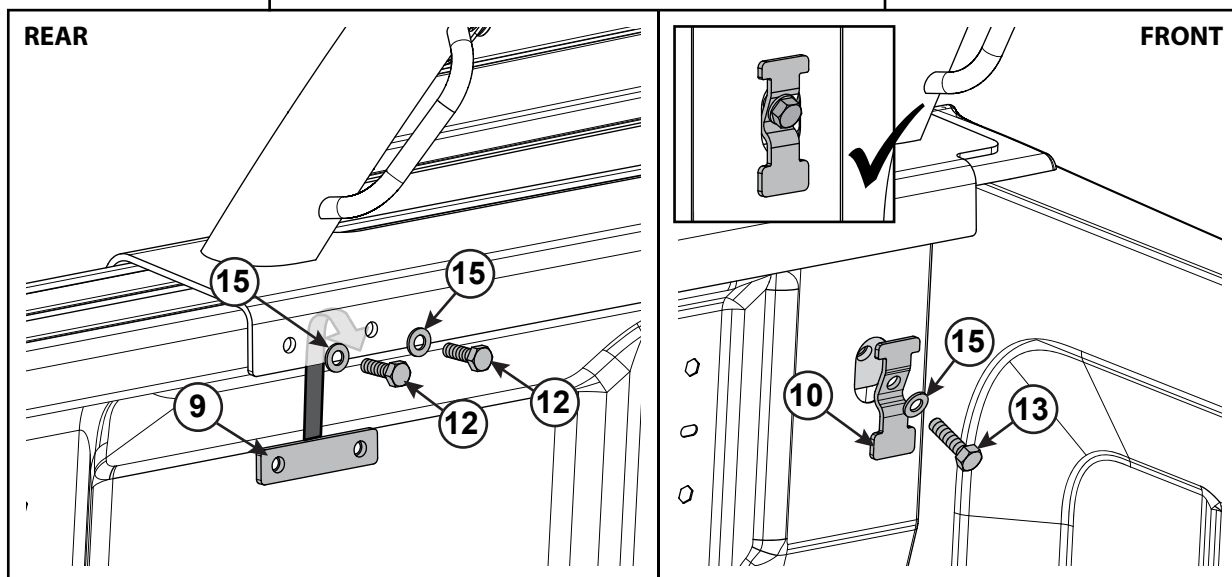
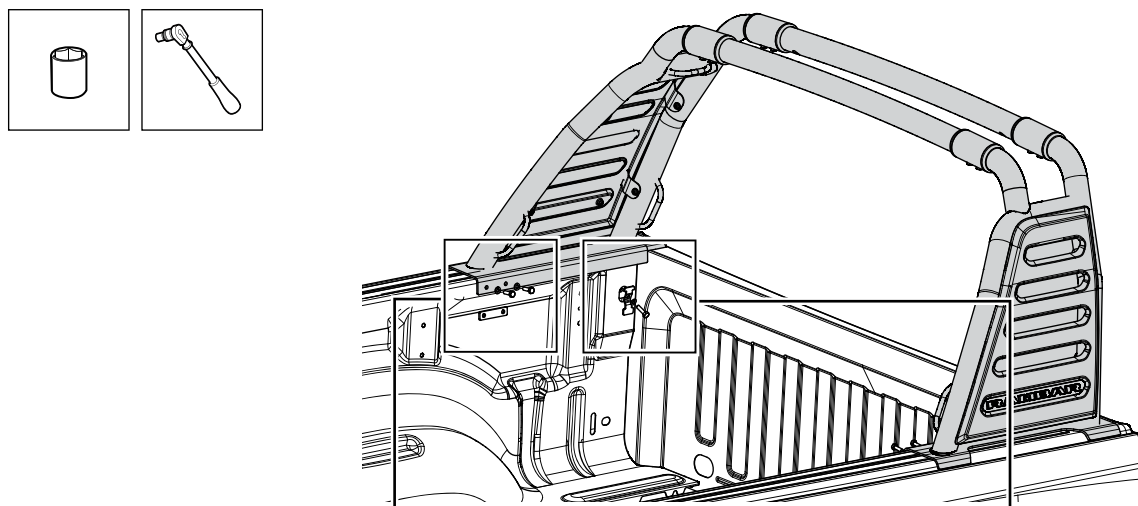
2 DRILL HOLES



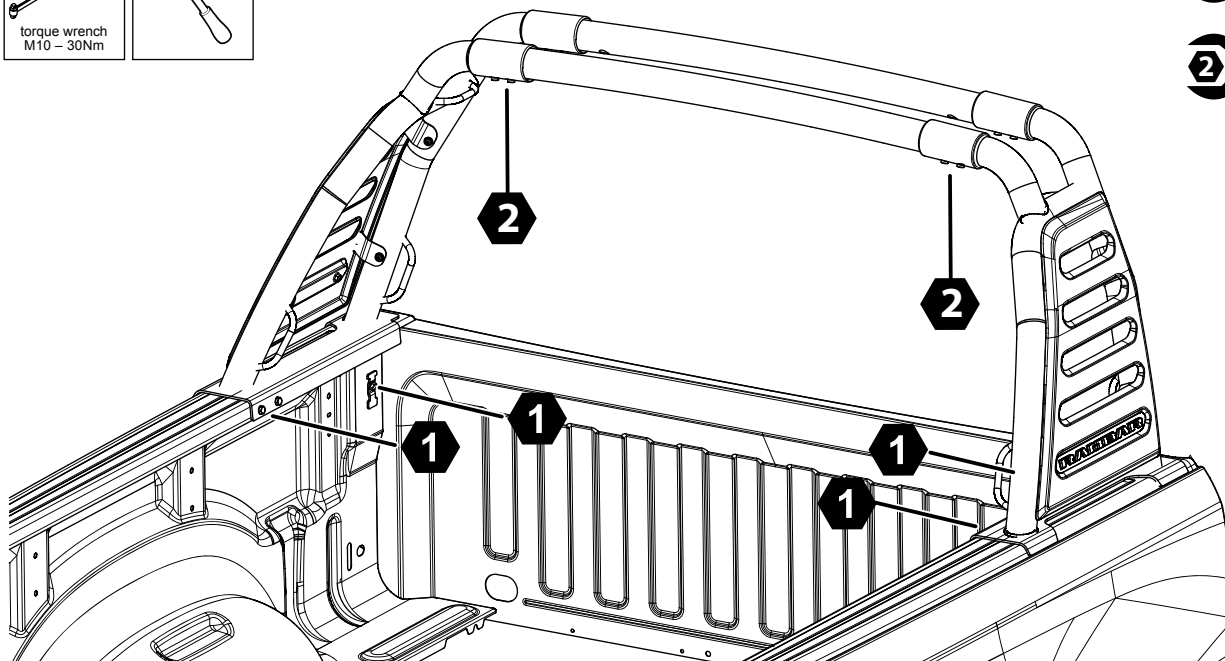
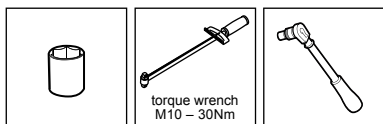
- 9.** Centre punch the two marked hole positions and drill each hole with a 3mm drill bit then with an 8mm drill bit using a drill stop at 10mm. Coat exposed metal with rust inhibitor and clean up any metal swarf. Repeat for the RHS.



- 10.** Using two people carefully lift the sports bar into position above the tub and slowly lower the Sports Bar Front Foot through the bed rail hole and lower the sports bar assembly onto the tub of the vehicle. Align the bar carefully and check that all drilled holes in the tub align with the holes in the bar.



- 11.** Loosely attach the bar to the front of the tub using the Front Foot Clamp (10), M8 Bolt (13) and M8 Washer (15). Attach the bar to the rear of the tub using the Rear Foot Clamp (9) and M8 Bolts (12) and M8 Washers (15) as shown.



- 12.** Centralize and check the final position and alignment of the bar on the tub. Tighten all M8 Bolts on the tub (13) and (12) to the recommended torque of 24Nm followed by the top bar Joiner Flanged Bolts (11) to a recommended torque of 29Nm.