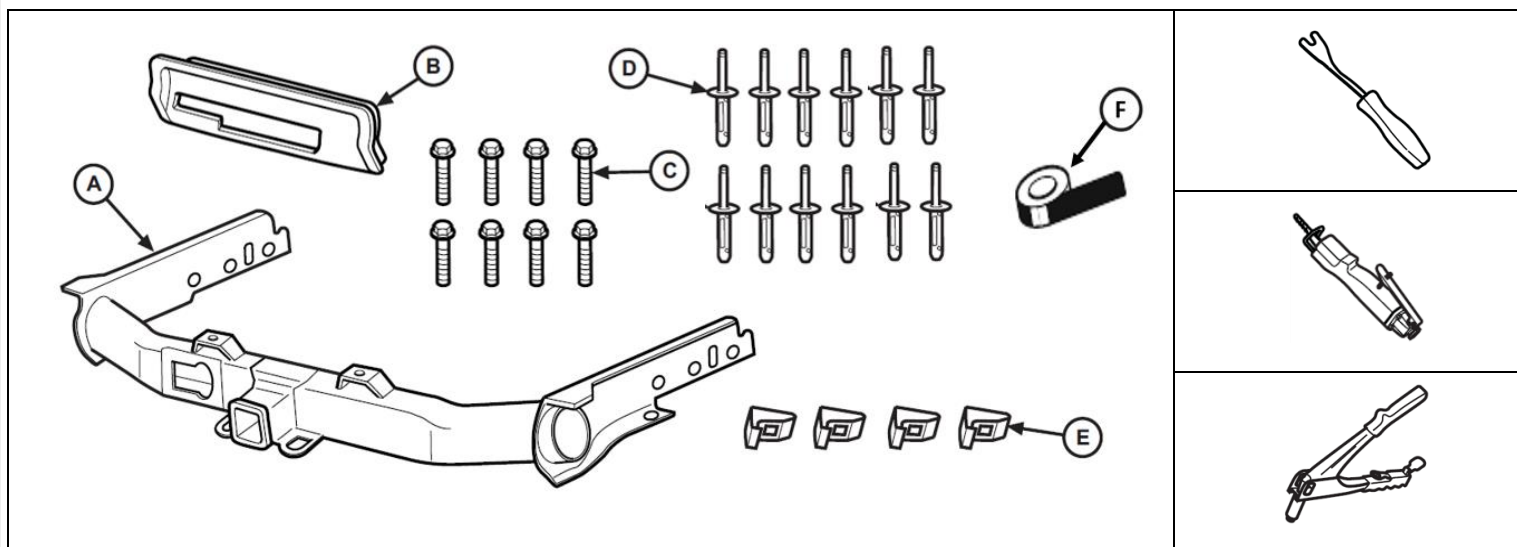




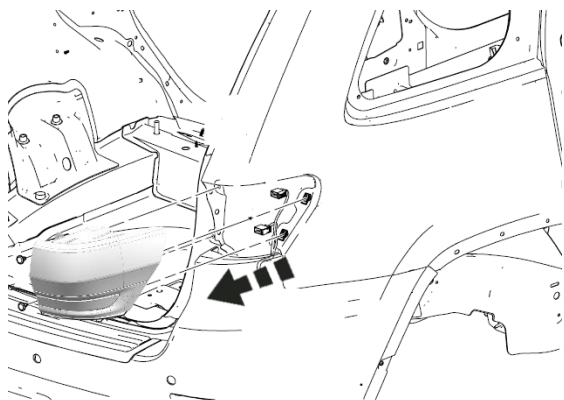
Trailer Hitch GRAND CHEROKEE

www.mopar.com


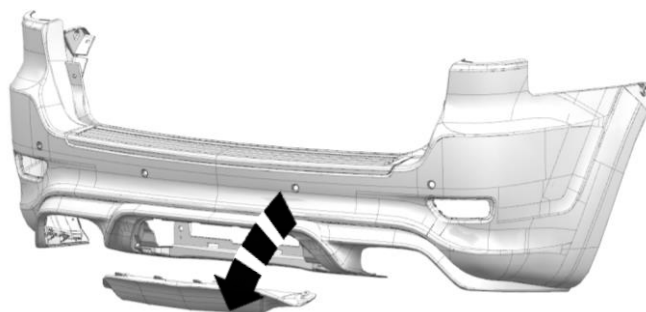
Call out	Description	Quantity	Service Part	Part number
A	Hitch Assembly	1	Y	52124606AF
B	Bezel (Decoma P/N 363018)	1	Y	68111636AA
C	Bolt	8	Y	06508668AA
D	Pop Rivets	12	Y	06500911
E	Spring Clips	4	Y	68078584AB
F	Acrylic Foam Tape (Argent)	1	N	68400785AA

*******Retain all fasteners for re-assembly unless otherwise noted*******

1. Remove taillamp assembly.

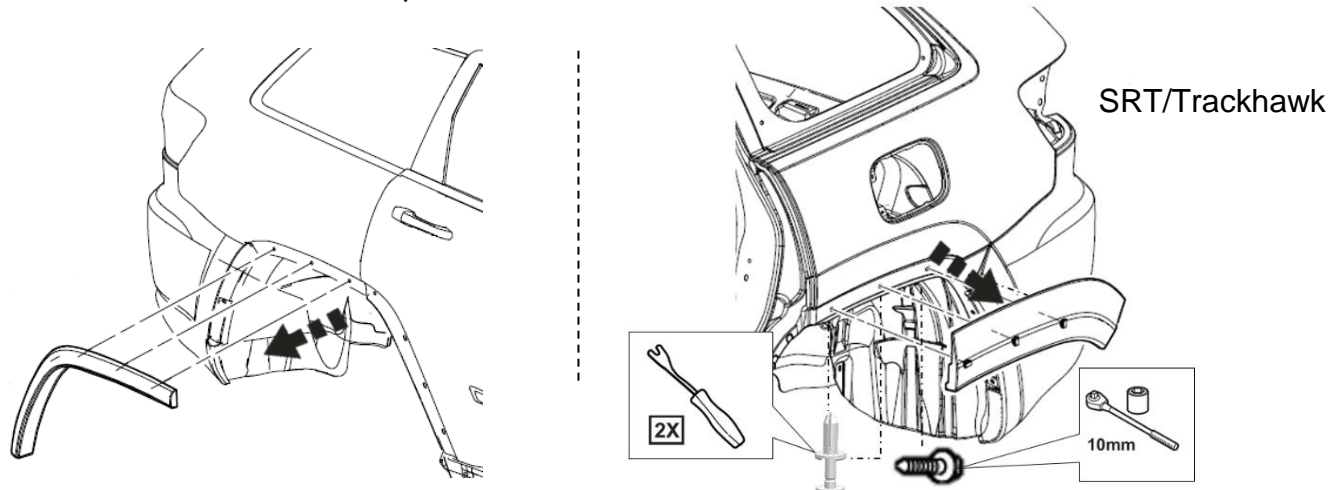


2. Remove hitch cover.

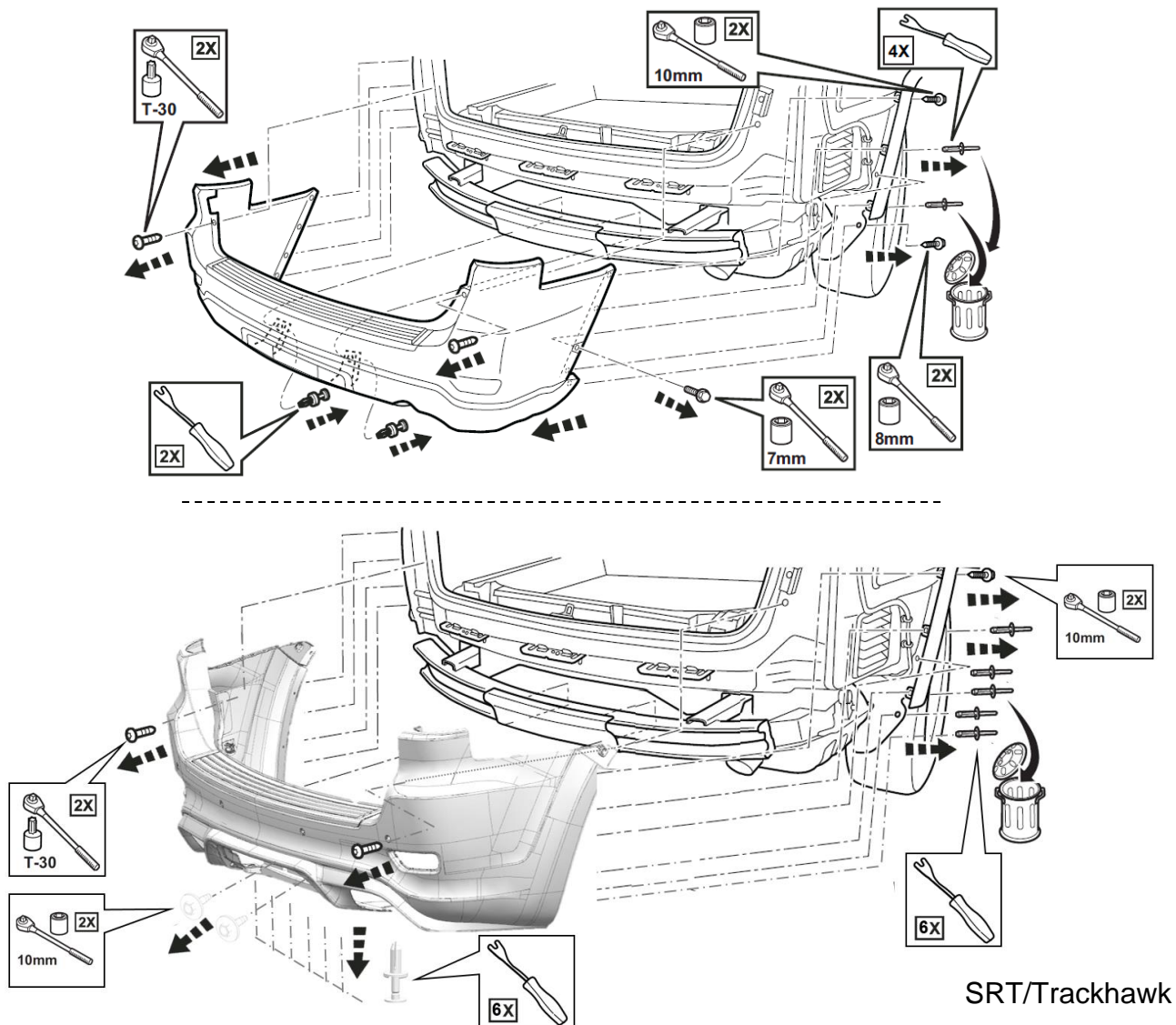


SRT/Trackhawk

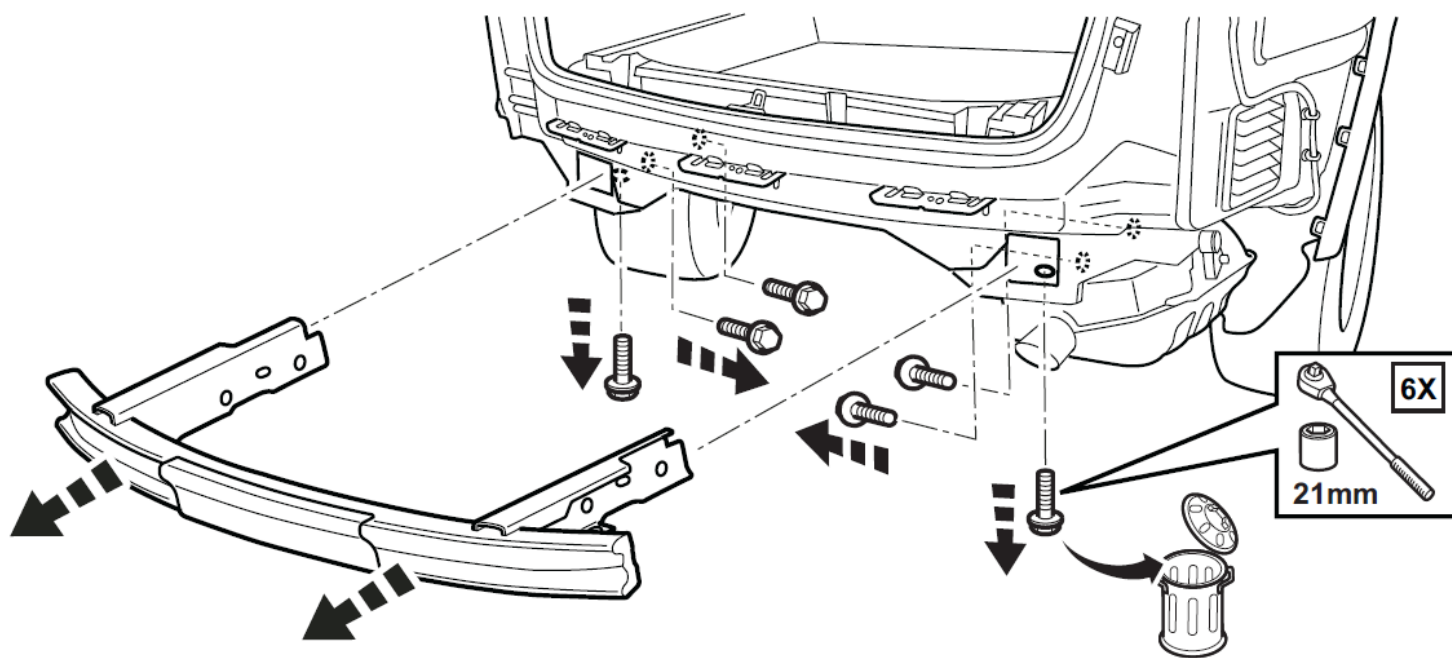
3. Remove wheel flares / fender strip.



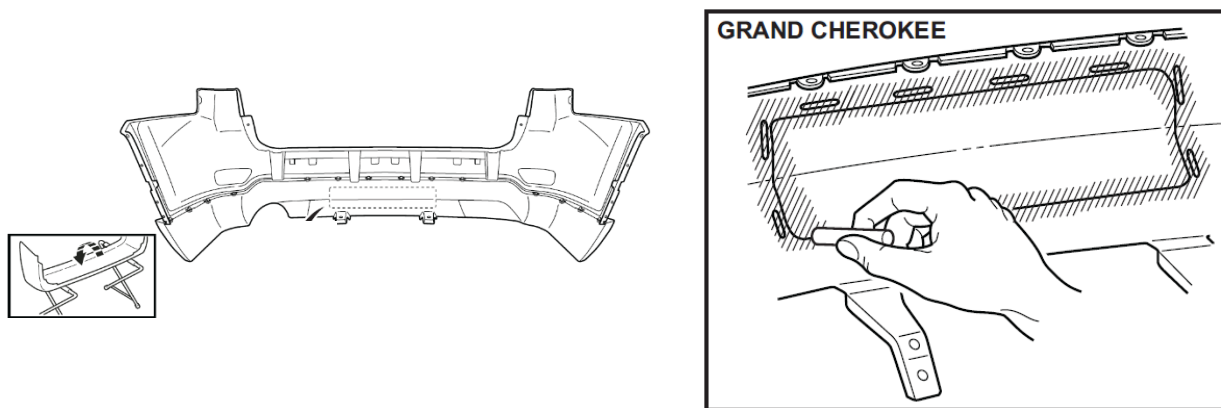
4. Remove rear fascia.



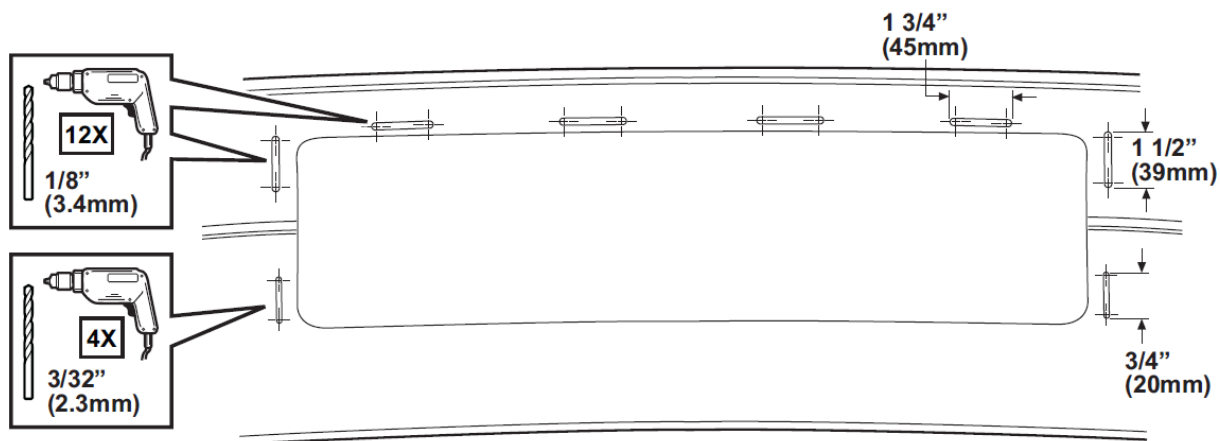
5. Unbolt and remove existing crossmember. Discard crossmember and all fasteners.



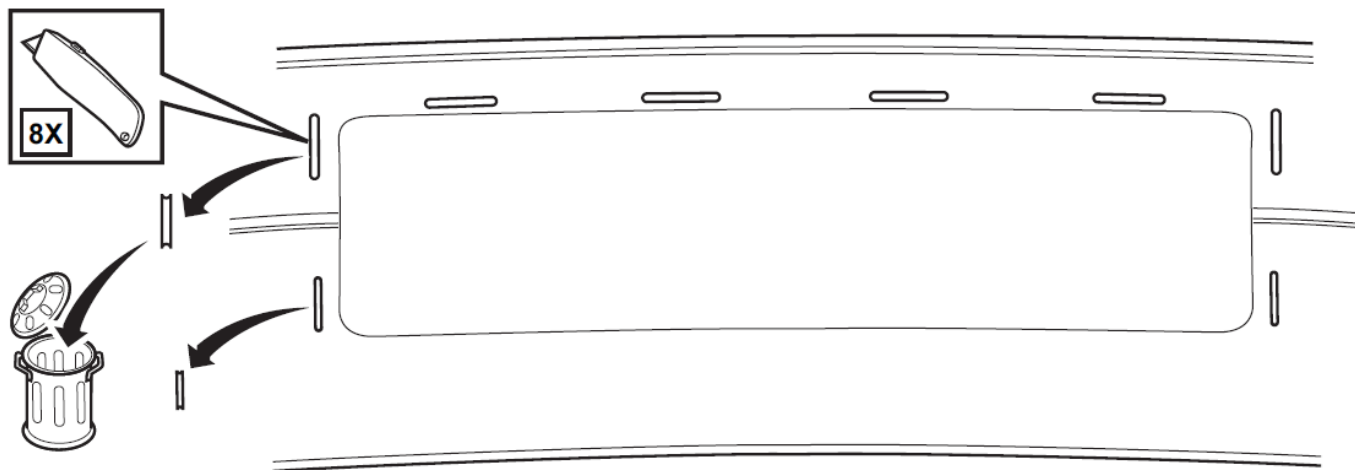
6. Place rear fascia face down on support buck. Rub area with white chalk to highlight the scribed rectangle and slots indicated on inside lower surface of bumper.



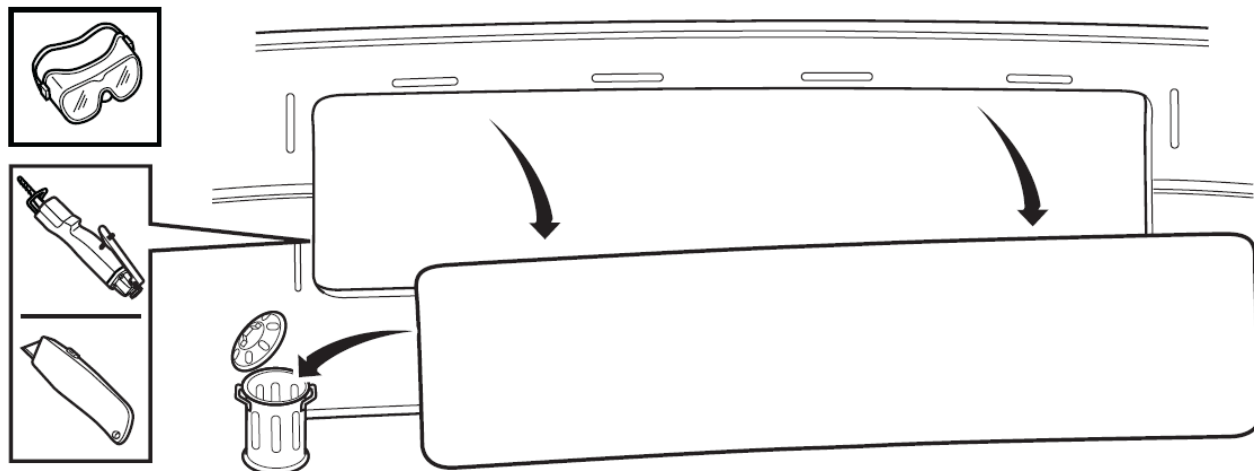
7. Drill starter holes for tab openings according to scribed areas as shown. Use a 1/8" (3.4mm) bit for the top six slots and a 3/32" (2.3mm) bit for the lowest two slots. Be sure to drill both ends of the slots.



8. Cut through remaining area of tab openings with a utility knife according to scribed areas as shown. Discard cut out portions.

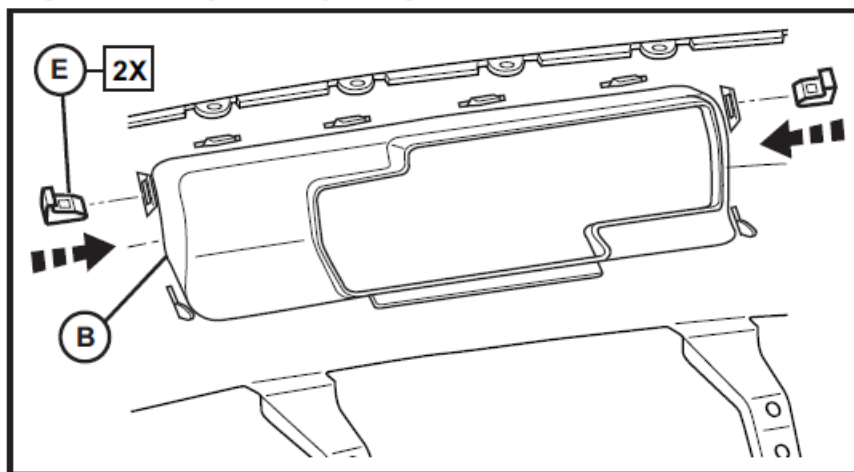
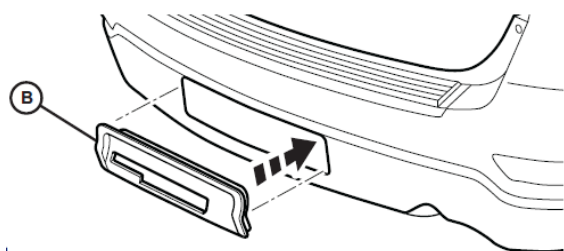


9. Cut out center bezel opening according to scribed area as shown. Discard cut out portion.



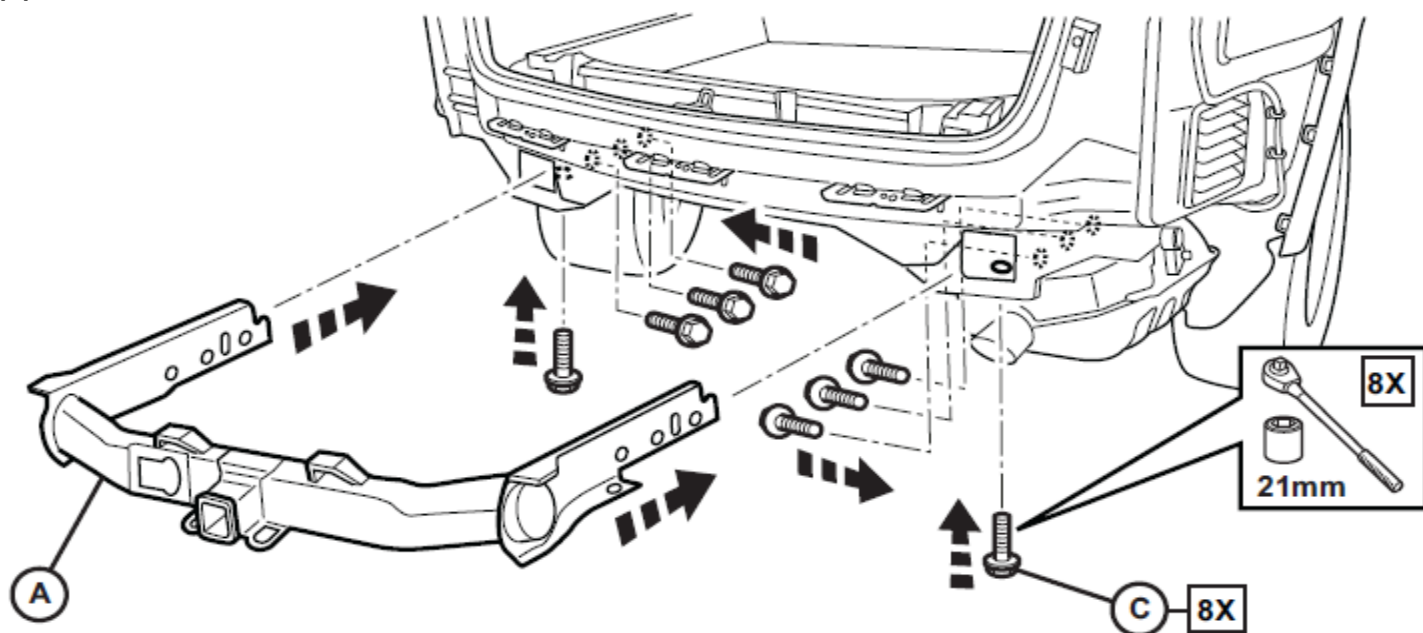
10. Press bezel into bumper opening. Be sure all tabs are firmly pressed in and secure with (2-4) spring clips as shown.

INSIDE VIEW GRAND CHEROKEE

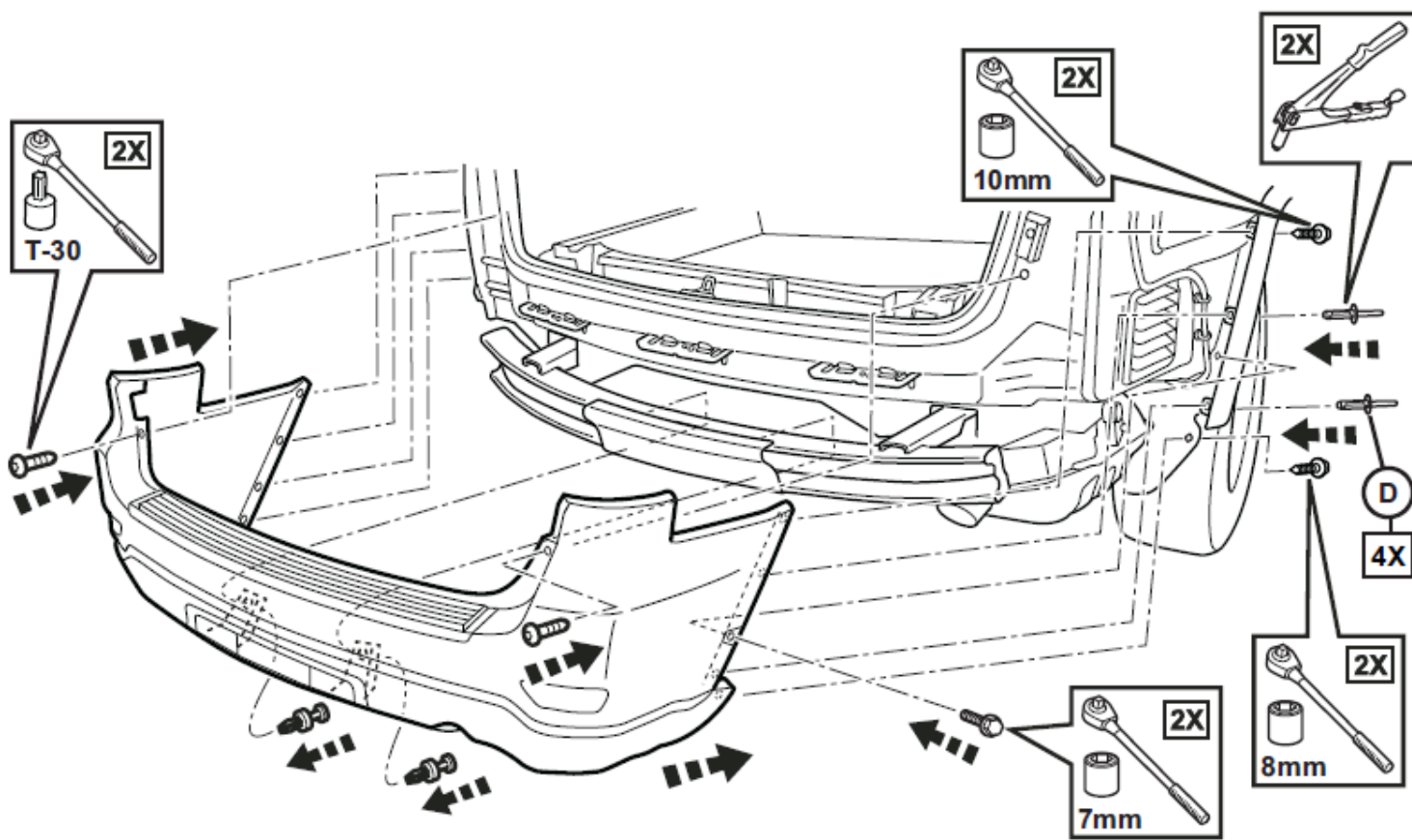


11. Using (8) 21mm bolts provided with the kit, install new hitch assembly. Tighten (8) bolts to 165 Nm (122 ft. lbs.).

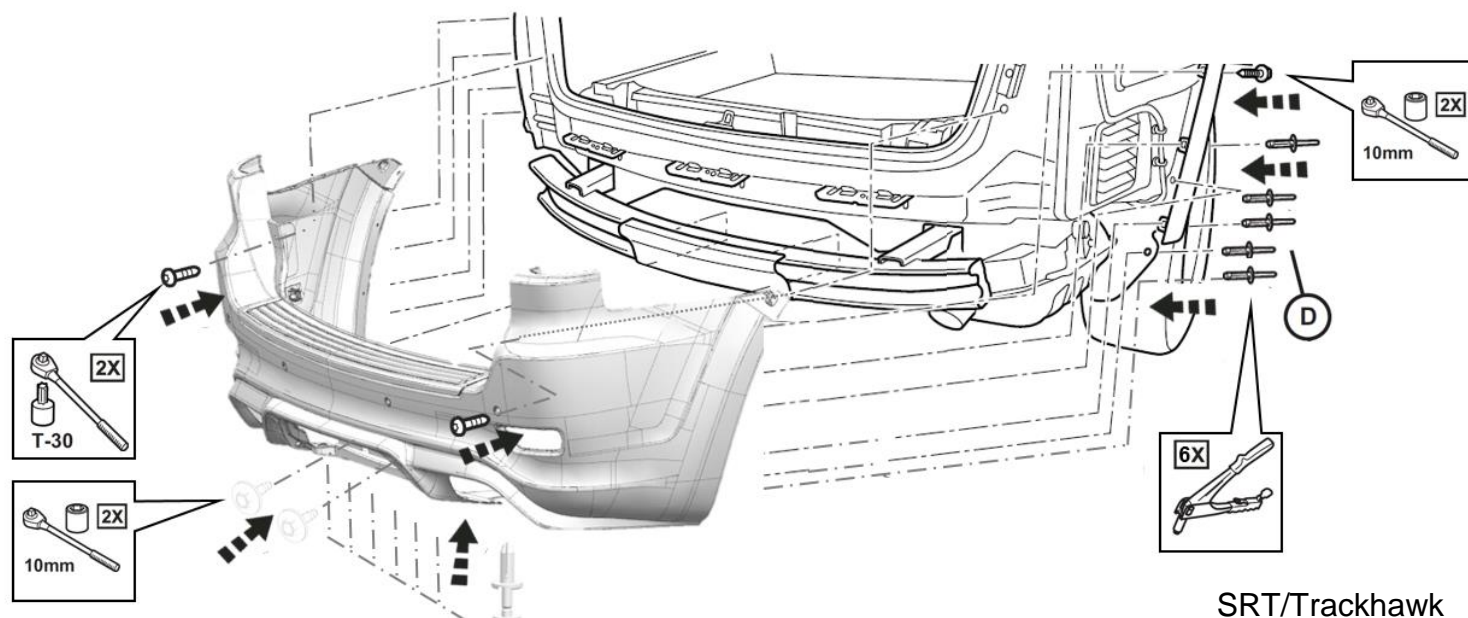
NOTE: Removal of cross member in step 5 involved (6) bolts. Installation of trailer hitch requires (8) bolts.



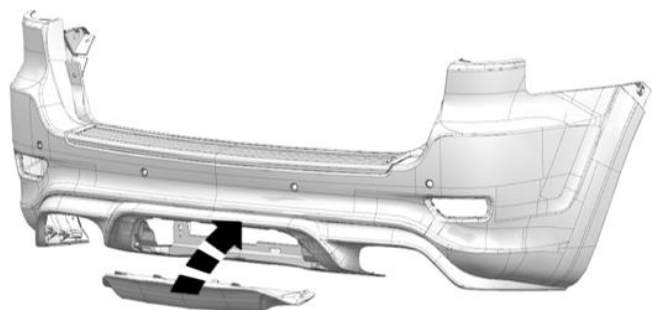
12. Re-install rear fascia.



Re-install rear fascia continued.

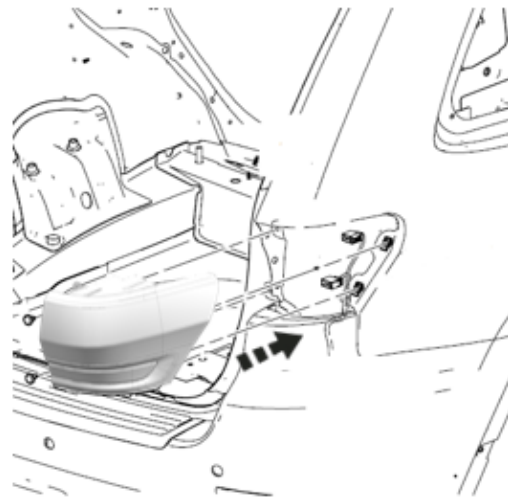


13. Re-install hitch cover.



SRT/Trackhawk

14. Re-install taillamp assemblies.



15. Re-install wheel flares / fender strip. Clean surface prior to applying tape.

